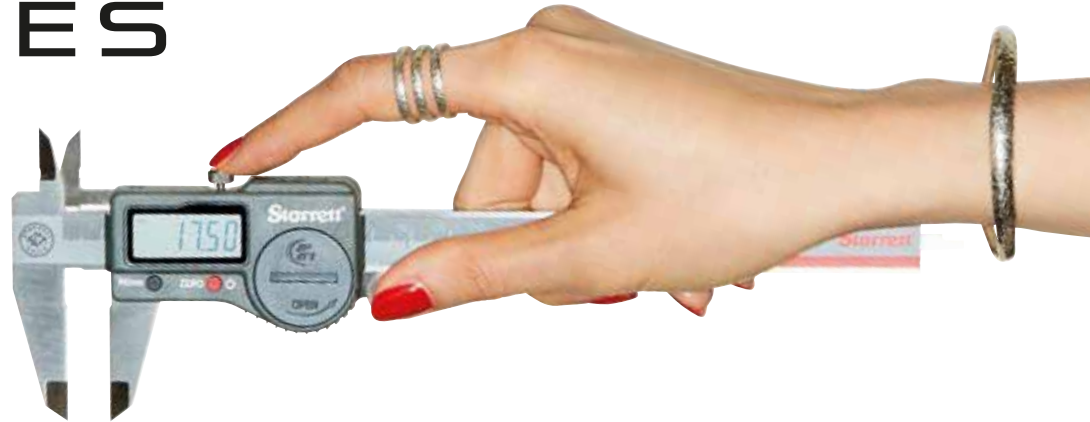


S-500 SERIES

BEAUTIFULLY
ENGINEERED
ALUMINIUM
DOORS

PRODUCT GUIDE



SPITFIRE
DOORS

MAKE A GRAND ENTRANCE



DAVID RICHARDS

Chairman

'Having lived for many years in Switzerland and Germany, I know that consumers on the continent have a wider choice of top quality entrance doors than we have in the UK.

Frustrated that the very best doors were not available here, I established Spitfire Doors with my team.

Our mission is to bring you the most innovative, technically advanced entrance doors available.

Doors are my passion and I believe that security, design, individuality and low maintenance are pre-requisites for any front door. Plus, increasingly people want to deal with authentic specialists when choosing important products for their home. To that end, we spend a lot of time working with our supply partners, developing new products and training, to stay at the forefront of the industry.



MANUFACTURING PARTNER

- Market leader in mid/high-end entrance doors in Europe
- Factories and offices located in Slovenia (EU) on the Austrian border
- Single focus is aluminium residential entrance doors
- Environmentally aware company with profits reinvested in business



- Employees: 220
- Manufacturing approximately 30,000 entrance doors per year



- Sales support material
- Catalogues and fliers, can be overprinted with your company logo



EXCLUSIVE
HARDWARE
PREISLISTE

HAUST

HAU

[illegible][illegible]

(picture of corner sample)

-



SPITFIRE
DOORS

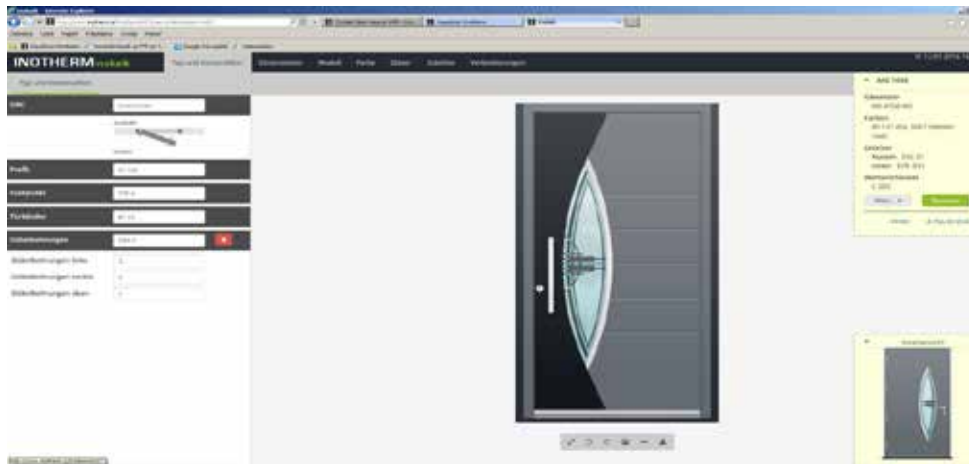
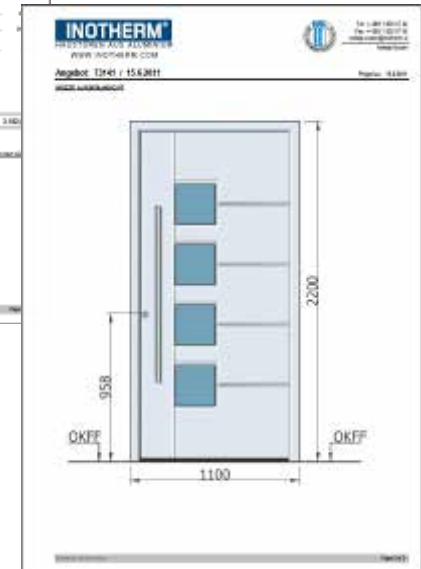
MAKE A GRAND ENTRANCE

EFFECTIVE SALES AND QUOTATION SUPPORT FROM SPITFIRE

- Processing of legible and complete enquiries within 24 hours
- Sales & Technical Support is always available
- Quotes include structured prices and color drawings to scale
- Spitfire 'Quick Quote' Software
- Inotherm Bespoke Door Designer software
- Bespoke software to draw, calculate prices and superimpose a picture on customer's own property
- Product and installation training

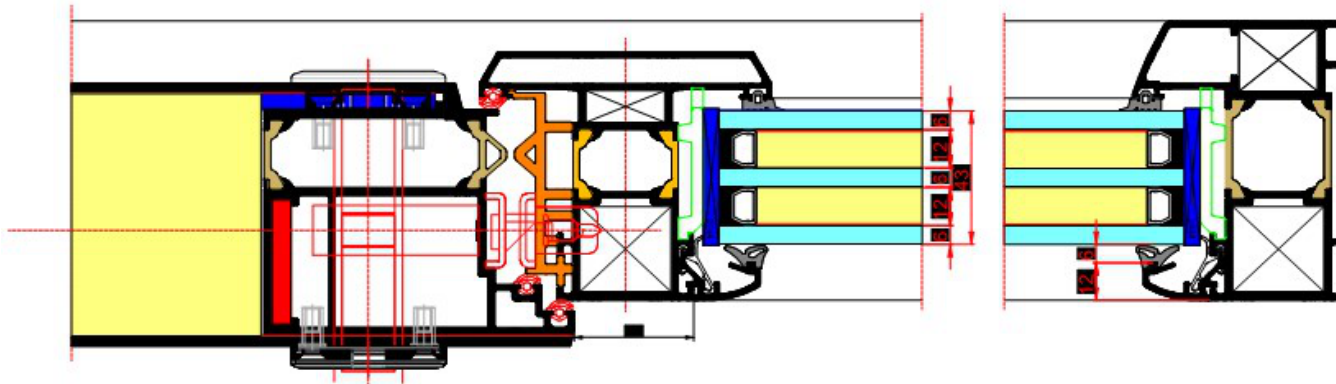


A detailed Inotherm quotation form. At the top, it features the Inotherm logo and contact information. The form is filled out with specific details for a door project, including a date of 15.6.2011, a customer name, and a project description. It includes sections for technical specifications, material choices, and pricing. The bottom of the form contains a summary of the quote and a signature line.

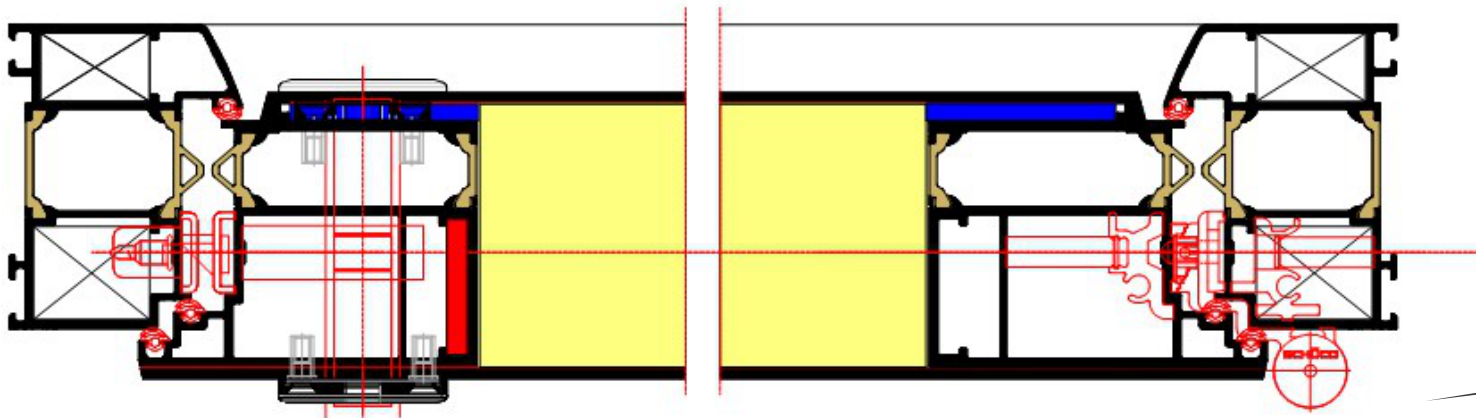


SPITFIRE S-500 SERIES HORIZONTAL SECTION

Horizontal Section
Door and Sidelight
AT100 Frame

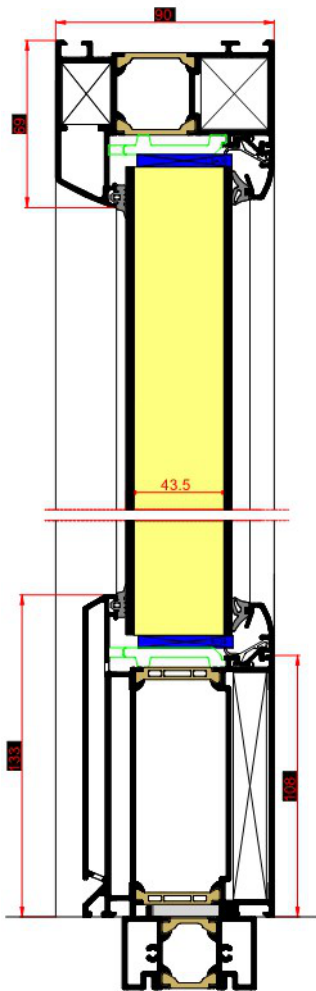


Horizontal Section
AT100 Frame

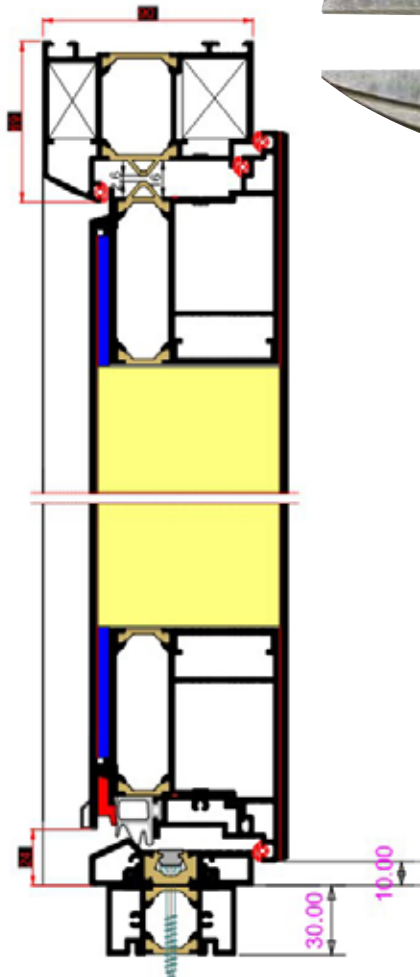


VERTICAL SECTION THROUGH SPITFIRE S-500 SERIES SIDE PANEL

Vertical Section Through
Side Panel AT100 Frame



Optional Threshold Packer Shown



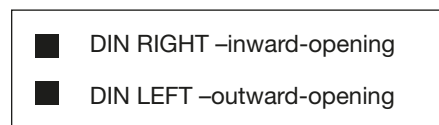
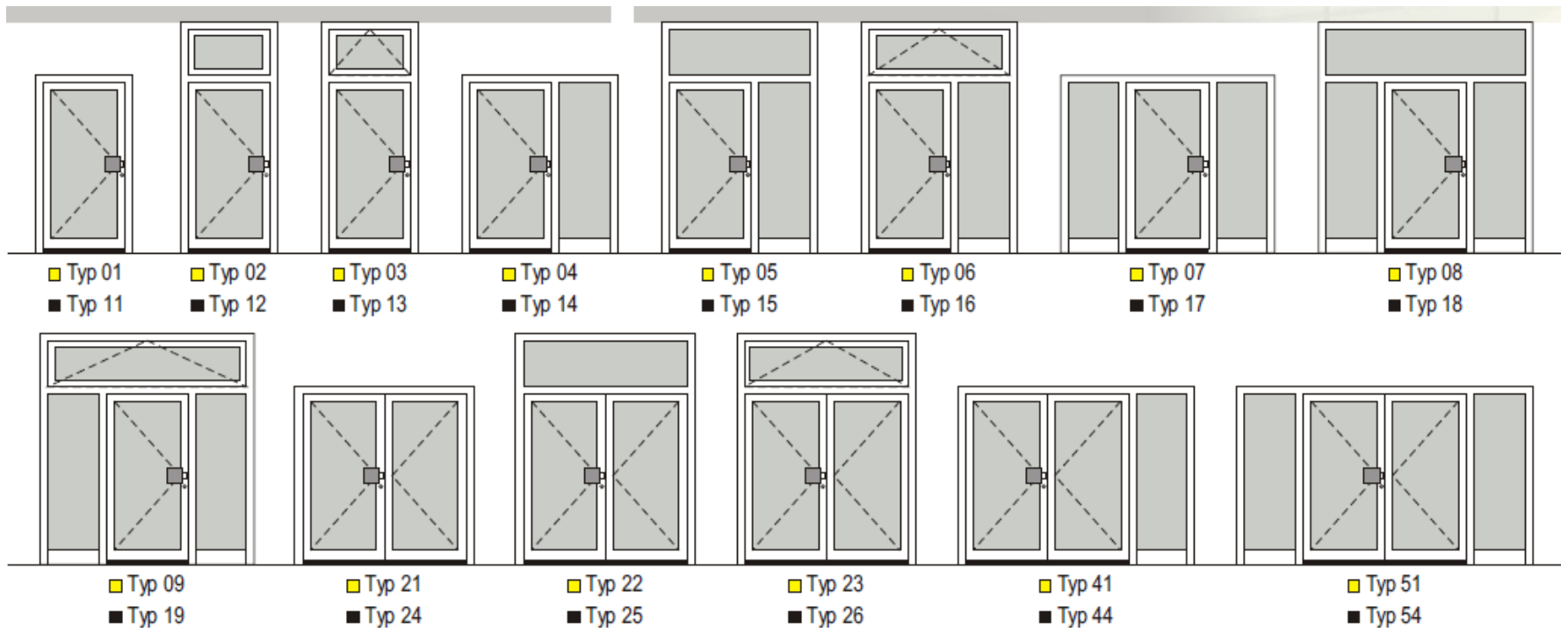
Threshold Packer is an optional extra



**SPITFIRE
DOORS**

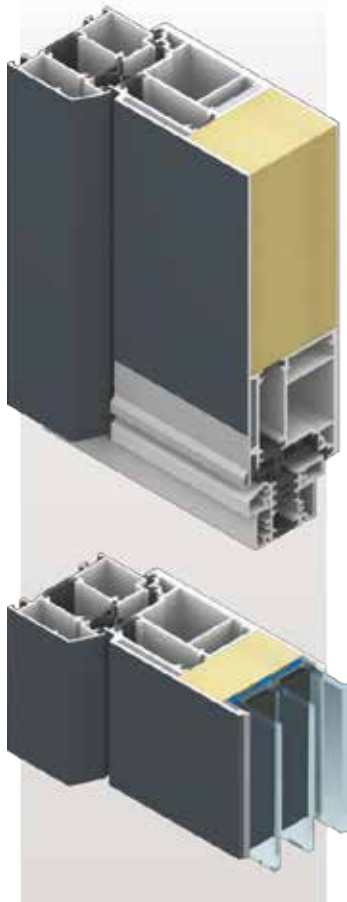
MAKE A GRAND ENTRANCE

CONFIGURATION OVERVIEW



Arrows point to handle position
(Viewed Externally)

EXCLUSIVE RANGE OF DOORS - STANDARD FEATURES



FROM
0.74W/m²K

1. Exceptional thermal performance -from 0.74 W/m²K i.e. better than Passiv Haus standard

- 85 mm insulating foam slab
- Triple glazing, 0.5 W/m²K
- Thermally broken aluminum threshold with concealed mounting
- 3 circumferential seals and vulcanized corner fittings

2. Very Secure

- Passed RC3 Test at IFT Rosenheim
- Document Q compliant
- Shapely stainless steel security rosette, protection against drilling and snapping
- Burglar-proof WK1 and WK2 security upgrades
- Various automatic locks and opening options

3. Patented protection against distortion

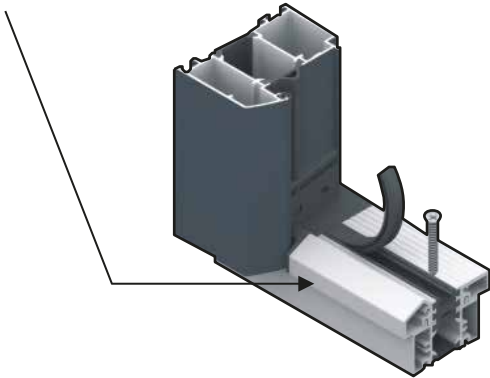
- Patented dilation layer to prevent leaf deformation. No problems with warping!

4. Functionality & custom design

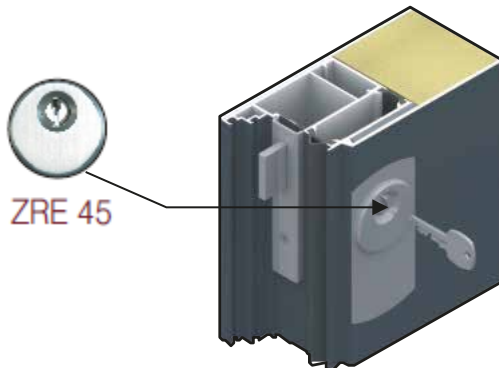
- Designs can be adapted to individual wishes
- Backset 45 mm - More space for key to turn
- Design Details such as stainless steel hardware, kick-board, house numbers flush-mounted, Swarovski® crystals!

FEATURES OF S-500 DOORS

Floor threshold is Satin Anodized
thermally broken with a cap seal
and invisible screw fixing



Shapely, discreet stainless steel exterior security rosette
excellent security, protection
against drilling and snapping.
Anti scratch plate option



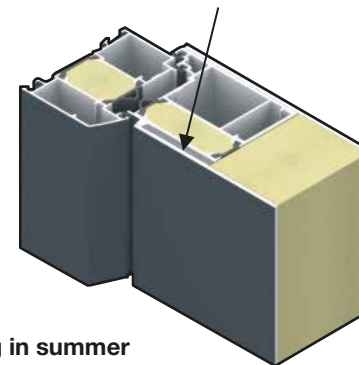
Vulcanised corner seals
for enhanced weathering

Design Details

such as stainless steel
hardware, weatherboards,
scratch protection, house
numbers are all flush-mounted

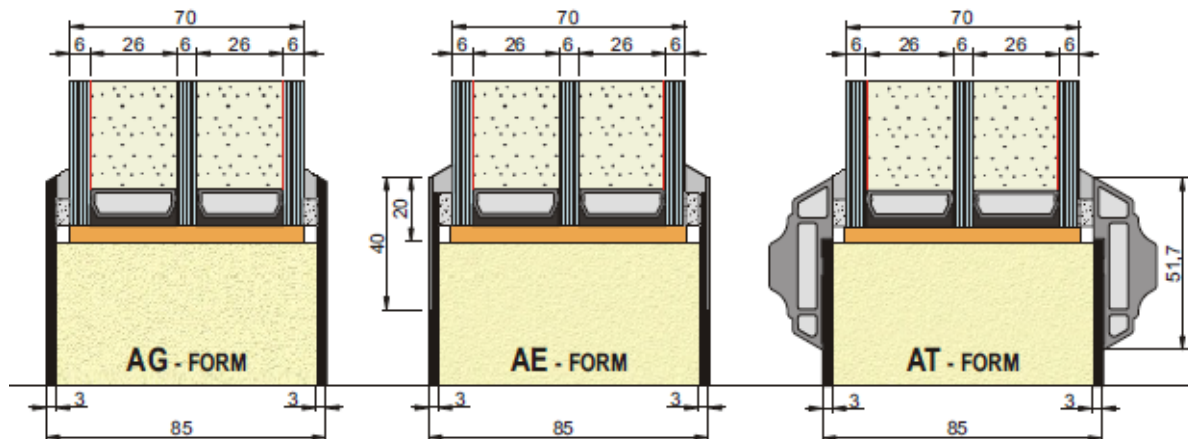


**PATENTED FEATURE
- UNIQUE TO S-500 -
SPECIAL DILATION LAYER
WHICH PREVENTS DOOR
DEFORMATION**



**No chance of your door distorting in summer
or winter due to extremes of heat or cold...**

S-500 - MODEL SERIES*



AG Series
Models without an ornamental frame

AE Series
Stainless steel ornamental frame on both sides

AT Series
Models with aluminium ornamental frame on both sides



ART Series
Design models



AH Series
Models with wood decor



Modell AGE 1110



Modell AEE 1160



Modell ATE 1320

STANDARD EQUIPMENT INCLUDED IN THE PRICE ON S-500 DOORS.



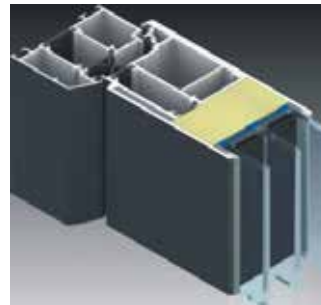
Security BT 3
3-way hook lock



Secure and adjustable
3-piece Schüco
barrel hinges



Inside handle standard
GA 13 Aluminium satin finish



90mm deep
Door frame profile



K 20
PZ Standard



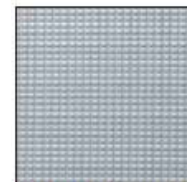
Security ZRE 45
Exterior safety rosette



Ornament 504 weiss



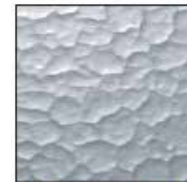
Kathedral weiss



Ornament 597 weiss



Chinchilla weiss



Ornament 523 weiss



Gussantik weiss

G1 – Ornamental Glass
Group 1

30 STANDARD COLOURS



SPITFIRE
DOORS

MAKE A GRAND ENTRANCE

STANDARD GLASS



Ornament 504 weiss



Kathedral weiss



Ornament 523 weiss



Ornament 597 weiss



Chinchilla weiss



Gussantik weiss

**G1 – Ornamental Glass
Group 1**



Mastercarré weiss



Masterray weiss



Masterpoint weiss



Masterlignee weiss



Sputlyte weiss



Satinato weiss

**G3 – Ornamental Glass
Group 3**



Altdeutsch K gelb



Altdeutsch K weiss



Chinchilla bronze



Altdeutsch K bronze



Gothik weiss



Delta weiss

**G2 – Ornamental Glass
Group 2**



Madras Pave weiss



Satinato grün



Satinato blau



Madras Pave blau



Madras Uadi weiss



Madras Uadi blau

**G4 – Ornamental Glass
Group 4**



GLASS MOTIFS

Motifs can be applied or adapted at no extra cost!



MS
Glass motif on clear glass



MSS
Glass Motif on Satinato glass – white, green and blue or on Parsol – grey, green and blue

LOCKS

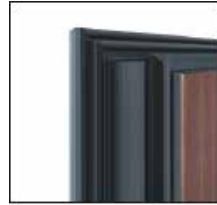
Standard: 5 -POINT LATCH LOCK



Soft lock case

Benefits at a glance:

- Quiet close
- Easier catch retraction
 - No grease in the catch
- E latch option*



Keep plate

The stainless steel keep provides increased security and +/- 2 mm adjustment ensuring a better fit.

The keep plate is standard equipment with all lock combinations.

*We have an 'E' Latch option which allows you to leave the door "on the latch" e.g. when working in the garden.

S-500 ENTRANCE DOORS

are all equipped as standard with a high quality 5 point lock and an end-to-end keep plate made from solid stainless steel. 2 hooks, 2 bolts, 1 deadbolt. If you want to further enhance security you can select additional options listed in our Technology Programme.



LOCKS

The entrance doors of the

EXCLUSIV RANGE

all have features and are equipped with a high quality three-point latch lock and an end-to-end shooting adjustable bolting bar made of solid stainless steel.

If the user wishes to additionally increase anti-burglary protection, he or she can select from among the additional options listed in the range of fittings and hardware.

Bolting bar

The stainless steel bolting bars provide increased security and the adjustable feature of +/- 2 mm ensures higher bolting comfort. The bolting bar is installed as a standard component in all lock combinations.

BT 5
BT 5 KABA

5-point lock with round bolts and latch
Stainless steel

BT 5
BTS 5 KABA

6-point lock with round bolts and latch with door edge gap guard
stainless steel

Rotary knob with rectangular pin to operate the door-opening lock



BT 6 - white
BT 62 - EV1
BT 64 - stainless steel

Without any risk!
The door edge gap guard TSH. In other words: the door opens without any risk.

- TSH is the additional protection that you can rely on.
- No peephole is necessary.
- No chain is necessary.
- No scratches and no damage to the chain.
- No additional key is necessary, since locking and unlocking is possible via the main lock box.

Softlock catch

Benefits at a glance:

- Quiet closing sound
- Easier catch retraction
- No grease in the catch

Electric door opener

BT 7

electric door opener with day latch and cabling



**SPITFIRE
DOORS**

MAKE A GRAND ENTRANCE

LOCKS



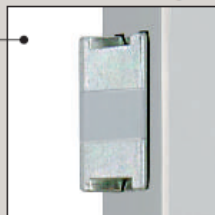
AGU 3 AGU 3 KABA

3-bolt latch lock
with automatic locking
Stainless steel

AUTOMATIC LATCHBOLTS

Simply let the door fall into the lock:
The automatic latchbolts get released 20 mm out after pulling the door shut and are then secured against being pressed back – the door gets locked without locking it. The closure systems can be opened from inside with a handle and from outside by turning a key whenever required.

Benefits of the comfort latch:
- the plastic insert permits the door to be closed softly
- easy operation of the latch
- no grease necessary in the latch
- adjustments of the latch possible via the AT of the bolting bar



Automatic multiple locking:
GU-SECURY Automatic –
the lock with the click



BT 1020 Comfort BT 1020 Comfort KABA

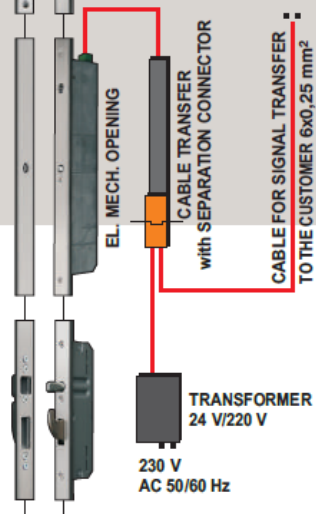
5-point locking swing bolt
with electronic drive -
stainless steel and
cable transfer

GENIUS-SYSTEM

- 5-point locking swing bolt with an electromechanical drive
- end-to-end locking bar made of stainless steel
- FZG (free-running profile cylinder with danger function)
- including 6 keys

As soon as the entrance door is closed, it is locked automatically. The door is unlocked from inside by operating the handle and from outside via its cylinder keys. Moreover, it can be unlocked from inside via the speaker system, button ...possible from outside via the INOTHERM entry modules or another entry control system.

In addition, the quick opening mechanism **GENIUS COMFORT** is installed that enables the Genius to be opened easily with the help of the pusher on the inside of the door.



**SPITFIRE
DOORS**

MAKE A GRAND ENTRANCE

LOCKS

ET inokey SYSTEM



inokey
SYSTEM



2 relays
FINGER SCANNER
with 1,000 loggings



2 relays
CODETASTER
100 user codes
with 4 to 16-digit number



WIRELESS REMOTE CONTROL
Opening the doors with the wireless remote control
(with 2 pieces supplied by default),
in addition with a digital doorbell
and a movable interior unit.

What is it?

inokey fingerprint reader is a device with which you can open the door with your fingerprint. It is an indispensable component of the entrance door of the best quality. It contains the latest technology of this type, and it is the result of the German and Slovenian findings and several years of experience in the field of biometrics. You will no longer have to look for your key or worry about whether the children have the key and call up the fire brigade in order to enter your own house.

HOW DOES IT WORK?

inokey has an in-built capacitive fingerprint sensor of the latest generation. It is very simple to operate since the finger merely presses on the sensor. That is a great advantage compared to the "pull" sensors with which you have to be careful about how quickly and from which you pull the finger over the sensor. If the finger is identified, the door is opened in 1.2 sec. The reader identifies even the moist, dirty, greasy and slightly injured finger.

AND THE SECURITY?

inokey does not save any fingerprints, but only the so-called templates which are actually a mathematical code. The algorithm that generates the template was developed at Siemens and is considered to be one of the best in the world. It is impossible to get the fingerprint image from this code again. However, everything is still further encoded, which means that misuse is practically impossible. The connection between the reader and the relay unit is protected with a special code that is changed continuously.



Stainless steel
matt



Polished
stainless steel



Stainless steel
PVD gold



Stainless steel
PVD black



**SPITFIRE
DOORS**

MAKE A GRAND ENTRANCE

COLOURS

Standard colours

For all other colour groups and combinations please request a quote

S-500 SERIES COLOURS

F1 - STANDARD COLOUR GROUP 1 (GLOSS OR MATT)

RAL 9016 Traffic white	RAL 9010 Pure white	RAL 5005 Signal blue	RAL 5014 Pigeon blue	RAL 8017 Chocolate brown	RAL 8016 Mahogany brown
RAL 1013 Oyster white	RAL 8001 Ochre brown	RAL 7001 Silver gray	RAL 7035 Light gray	RAL 7016 Anthracite grey	6077 Black brown
RAL 3000 Flame red	RAL 3003 Ruby red	RAL 6005 Moss green	RAL 6009 Fir green		

F2 - STANDARD COLOUR GROUP 2 (FINE TEXTURE COLOURS)

10 246 Metallic matt 9016	10 797 Metallic matt 9010	60 370 Green sprinkel fein text.	50 759 Pine green	80 255 Black sprinkel	80 077 Approx. DB 703 metal
90 148 RAL Metallic matt 9008	90 147 Metallic matt 9007	30 402 Rosso metallic	60 731 Terra brown	71 334 Anthracite grey	40 773 Blue metallic
70 161 Light gray metal. matt.	70 784 Gray sprinkel	60 740 Sepia brown	60 674 Gray brown		

F2 - STANDARD COLOUR GROUP 2 (IGP COLOURS)

IGPC 1 Aluminium matt	IGPC 36 Grey matt	IGPS 23 Beige matt	IGPS 22 Grey beige matt	Stainless steel matt
IGPS 21 Beige grey matt	IGPS 26 Brown gray matt	IGPC 37 Anthracite matt	IGPC 34 Brown matt	Stainless steel polished



SPITFIRE
DOORS

MAKE A GRAND ENTRANCE

MODIFICATIONS

TO EXISTING MODELS

THE S-500 EXCLUSIVE SERIES

includes more than 600 basic models. You have the option of modifying each model to obtain your desired, unique product. Important!

Any modification must be based on an existing model. For minor modifications, only one parameter may be changed, e.g. without relief grooves, modification of the position of the vision panel or an inverted design.

For large modifications, only one parameter may be changed e.g. increased size of the vision panel, segmentation of stainless steel areas or the addition of the decorative panel so that the door portrays a two-tone effect.



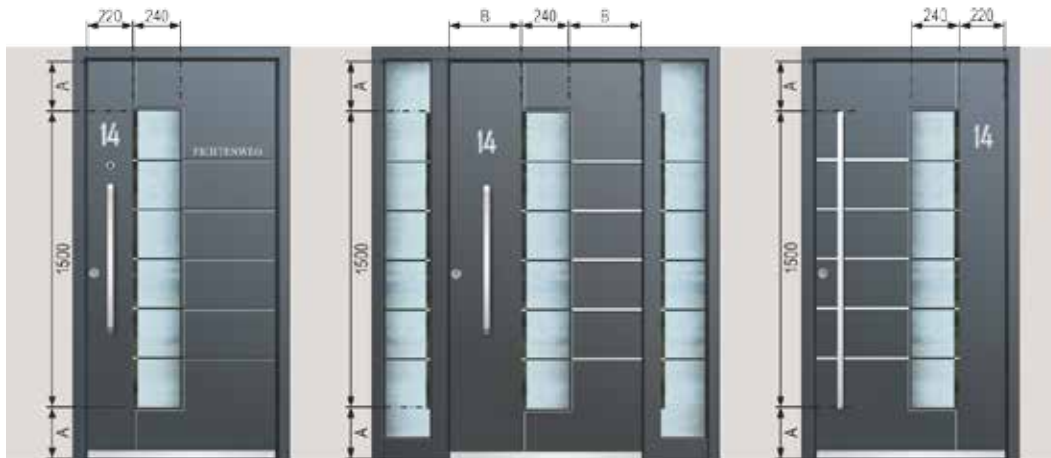
In the event that you cannot find the right look from our range of over 600 styles, we can create a door to your brief, within the scope of the EXCLUSIVE SERIES design parameters. A detailed drawing of your design is necessary in this case (photo/dimensional drawing).

MODIFICATIONS

TO EXISTING MODELS

AGE 1130

- MINOR MODIFICATIONS
- BASIC PRICE + 7%



AGE 1130

modified according to a drawing (excluding exterior stainless steel applications)

AGE 1130

modified according to a drawing (glass field centre-position)

AGE 1130

modified according to a drawing (inverted image model)

AGE 1130

- MAJOR MODIFICATIONS
- BASIC PRICE + 15%



AGE 1130

modified according to a drawing (Glass field 360 mm wide)

AGE 1130

modified according to a drawing (resegmentation of stainless steel application)

AGE 1130

modified according to a drawing (dichromic model)



**SPITFIRE
DOORS**

MAKE A GRAND ENTRANCE

DOOR SIZES

Architects, developers and home owners are increasingly asking for bigger and bigger openings. But we recognise stability and performance is critical..

S-500 Series entrance doors have designed-in stability with unique technical features, like 3mm wall thickness of all Schüco aluminium profiles and external sheets, to ensure that even at extreme dimensions (heights ranging from 2251mm to 2700mm and widths of up to 1260 mm) our doors perform..

For massive doors choose from our range of XL MODELS

These doors include a fourth hinge, extended 4 pin locking mechanism and reinforced stainless steel sections inside the door sash.

TECHNICAL DEVELOPMENTS

Now up to an impressive maximum height of 2700 mm!



NEW

ELECTRONIC PEEPHOLE NEW!

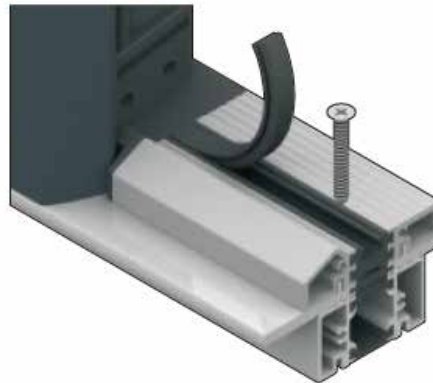
in 3 colours - a new sleeker version



ADVANTAGES

Easy-view with high definition LCD monitor screen and enhanced night vision for increased safety

NEW PACKERS



*

+Threshold packers

@ 5mm or 30mm or
150mm cill @ 25mm.

- 5mm packer is anodised to match threshold.
- 30mm packer can be colour matched to outerframe and anodised to match threshold.
- Cill available - black, white, anthracite grey and anodised.

NEW SKIRT PROFILE FOR SIDE PANELS



ADVANTAGES

Elegant appearance permitting concealed drainage - no ugly plastic cap.

FREQUENTLY ASKED QUESTIONS

As you would expect from the best residential entrance doors in Europe, our doors are available with so many options that it's difficult to list them all on our website. Feel free to ask us anything of course but we hope that we have answered the most obvious questions below.

Q. Are all of your products bespoke?

Yes. We do not offer standard sizes, as all of our products are manufactured to your exact requirements, designed specifically for your property.

Q. Can I upgrade my locking system to enhance security?

A. Yes

There are 3 levels of lock which all offer very high security.

Level 1 - BT3: 2 hooks, 1 deadbolt, 2 mushrooms, key wind, can have door safety catch

Level 2 - BT5: 4 hooks, 1 deadbolt, key wind, can have door safety catch

Level 3 - AGU: autolock, 2 hooks, 2 hi-security pins, 1 deadbolt, autolocks when 'pushed to'

Q. How are double doors secured?

A. With Schüco Shootbolts

The slave door is supplied with a 20mm long double shoot-bolt at top and bottom. A minimum of 10mm of each bolt is engaged into the frame head and into the threshold. The shootbolt system is supplied by Schüco and the bolts are simultaneously operated via a discreet lever, which is located at around chest height in the rebate of the slave door.

Q. Are Spitfire S-500 Series doors SBD or Document Q compliant?

A. Yes

The S-500 series has been tested and passed the stringent 'Level 3' testing at IFT Rosenheim in Germany, the leading European Test House. They have also been tested and passed the standard required for new build, Document Q of Building Regulations by The British Standards Institute (BSI).



FREQUENTLY ASKED QUESTIONS

Q. Does the S-500 Series meet the latest revisions of Building Regulations?

A. Yes

All of our doors fully comply with the latest building regulations in England, Wales, Northern Ireland and Scotland. Because our doors are manufactured on the Continent of Europe where building design and thermal regulations are more advanced we believe our doors are future proofed against advances in our local standards for many years to come.

Q. Do S-500 Series doors have Safety Glass as standard?

A. Yes

We only supply doors with Safety Glass. Our glazing is almost always triple glazed with the following specification: Outer pane 6.4mm laminated, middle pane 6mm float, inner pane 6.4mm laminated.

Q. Can I have automatic unlocking?

A. Yes

With our electromechanical locking system, incorporating fingerprint recognition or a key fob you can unlock the door, to an open-ajar position. When you simply push the door closed the lock will automatically operate and the hooks and bolts throw, engaging deep into the keep.

Q. What about automatic opening?

A. Yes

Our 'Advanced' AGU auto-system can be programmed to unlock and open the door to approximately 120 degrees. The door will usually be programmed to stay open for 30 seconds and will then gently close and autolock. If the fingerprint reader or keyfob is activated again whilst the door is automatically closing, the door will pause then fully re-open again for a further 30 seconds.

Q. Who makes the automatic opening gearing and is it reliable?

A. Geze and Yes

Geze are world leaders in door opening technology and their systems are regularly used on some of the most prestigious projects in the world. Check them out on www.geze.com.

The drive gear for your door will be discreetly located in the head of sash.



FREQUENTLY ASKED QUESTIONS

Q. Can you fit sensors to protect children and pets on automatic doors?

A. Yes

We can fit ankle height 'magic eye' sensors to stop an automatic door closing if there is an obstruction.

Q. Can I still open my door in the event of a loss of power?

A. Yes

Our advanced automatic opening system has a 30 minute battery back-up. And remember, you can always override all auto-systems with your key. Every S-500 door has a key as for back-up.

Q. Does auto-unlock work during a power cut?

A. No

You have to use your key to operate the lock but every door is supplied with 5 keys.

Q. Are the doors over-rebated to protect against wind and rain?

A. Yes

Both internal and external faces of the door leaf are rebated to provide maximum weatherproofing via the door seals.

Q. Is there a choice of outerframes?

A. Yes, but we prefer to offer only one. AT100 is our standard outerframe which is 90mm deep with a chamfered finish.

Q. Do Spitfire S-500 doors have thermally insulated profile options?

A. Yes

Our standard 'Exclusive' range of S-500 doors has an insulated sash but not outerframe and this product has a low (very good) thermal value of 0.9 W/m²K. Our S-500 'Exclusive Plus' range is insulated in both frame and sash and has a stunningly low thermal value of 0.7 W/m²K which is better than Passiv Haus.

Q. How many people can get access via a single Fingerprint reader?

A. 1000

Our readers can store 1000 fingerprints and it is easy to record new prints yourself by nominating a 'master' fingerprint. All it takes is an impression from the 'master' then 3 impressions of the new finger to record a new person. These systems are ideal if you wish to give access to your extended family or if secure and reliable access is required for a block of apartments.



FREQUENTLY ASKED QUESTIONS

Q. Can the reader be used to open another door?

A. Yes

A reader in our Genius Comfort 1 range has a double relay and can be programmed to operate 2 doors from the same reader. So you could open your front door with one fingerprint and an adjacent garage door with another.

Q. How reliable are Spitfire Fingerprint Readers?

A. Very

Spitfire units have been developed in conjunction with Siemens of Germany and we have sold thousands of units across Europe, which are still in daily use. All units come with a full 2 year warranty and it is relatively easy and not expensive to replace old units when the time comes. Ours is a capacitive fingerprint sensor which is very simple to operate because all you have to do is press your finger on the sensor. This is much better than “pull or swipe” sensors where you have to be careful how quickly and from which direction you pull your finger over the sensor. The Spitfire reader will identify moist, dirty, greasy and slightly injured fingers and will open the door in 1.2 seconds.

Q. How safe is Fingerprint Recognition?

A. Very

We use secure technology developed in conjunction with Siemens of Germany. Our reader does not save an impression, so there is nothing to hack. Spitfire systems are very safe and can even be configured to trigger a silent alarm.

Q. And if I don't trust fingerprints?

A. Use our codepad of a Spitfire Keyfob

Our codepad is very easy to use and is a modern unit incorporating advanced technology. All buttons are capacitive and are only activated when they come into contact with your finger tip, like an iphone. The advantage of our keypad compared to classical keypads is that they do not get worn out or show wear on certain numbers, even after longer periods of use; a common problem with conventional keypads.

Q. Can I control who has access to my home?

A. Yes

We have the option of a computerised control system which allows you to decide who can enter and at which times, via their fingerprint. So for example; you can allow your cleaner to access between 9am and 5pm, Monday to Friday only.



FREQUENTLY ASKED QUESTIONS

Q. Can I open my door via Smart technology on my mobile phone?

A. Yes

Simply connect your mobile device to our bluetooth technology and when you approach the door you can activate the auto-unlock using your phone keypad. Our bluetooth system has an unique PIN code and up to 100 smart devices can be added.

Q. What are the size limitations on single doors?

A. See table below:

Minimum size: width 850mm and height 2000mm

Standard doors: maximum is 1260mm wide x 2250mm high

Large doors maximum 1100mm wide x 2251-2500mm high

XL doors maximum 1100mm wide x 2501-2700mm high

Q. Can my door open outwards?

A. No.

Q. Are your products suitable for commercial use?

Yes, many of our doors have been installed in commercial premises like apartment blocks and homes of multiple occupancy. They are designed to withstand many years of constant use even in high pedestrian traffic zones.

Q. Are S-500 Series Doors easy to install?

For an experienced fitting team they are very easy because the profiles are so rigid. However, it is a 2 person job and sometimes more people than that are required to help move the door into position because of the weight of the door. We would recommend that only trained Spitfire Design Partners carry out an installation.

Q. Do doors come fully assembled?

Yes. Doors are supplied with all parts fitted and all components glazed. Sidelights and toplights have to be de-glazed for installation.



FREQUENTLY ASKED QUESTIONS

Q. How many wood effect finishes are there?

A. 20

The range is very wide and we can usually match all wood types.

Q. Will my wood effect fade? Almost imperceptibly but yes over years.

We like to compare our paint and wood effect finishes to automotive finishes. Just like your car, over many years there will be degradation in the finish due to exposure to ultra violet light, but as with your car you will probably never notice.

Q. Do you have a low threshold?

A. Yes

All doors are supplied as standard with a 20mm high thermally broken aluminium low threshold. Be aware that this threshold provides only 10mm of cover internally between the top of the threshold and the bottom of the door sash – please think about your finished floor level - carpets, tiles, parquet flooring etc. very carefully!

Q. Do you have threshold (base) packers?

Yes

We have a 5mm anodised aluminium packer and a 30mm aluminium base packer. Either be supplied in an anodised finish to match the threshold, and the 30mm can be powder coated the same colour as your door frame.

Q. Which elements are provided by market leader Schüco?

A. Many

All aluminium profiles which are unique to S-500 Doors, all hinges, shootbolts and all thresholds.

Q. Are the hinges adjustable?

A. Yes

Multi-adjustable in 3 planes and are probably the most adjustable entrance door hinges in the world. They are very high quality and on XL doors we fit 4 hinges, 3 on all other doors. They can be supplied in satin, white or black.



FREQUENTLY ASKED QUESTIONS

Q. If I order built-in LED lights, how do they work?

A. Very simple

Spitfire S-500 Doors will come pre-wired and you just need an electrical spur to wire into. LED lights can also be fitted in handles and all LED's come on at dusk and go off at dawn and only cost pennies to run per day.

Q. Can I have a letterbox on an S-500 Series Door?

A. Yes and No

We will never put a letterbox within an S-500 door leaf because it would destroy the thermal value and could compromise security. We offer a range of high quality German letterboxes that can be fitted on a wall or we can offer a Renz letterbox system in a sidepanel.

Q. How heavy are S-500 Series Doors?

A. 100kg.

A door with 2 sidelights is circa 200kg. However, all Spitfire Doors are surprisingly light to operate when installed.

Q. How long does an installation take?

A. This will depend on the size and configuration of the door, the site access, property condition and whether the door is replacing an old door or is going into a new aperture. But, as a general rule installations take a day. If your project is particularly large or complex our Design Partners will advise you

.

Q. What is the lead time for a door?

A. 8 weeks.

From receipt of full payment your door will be delivered in 8 weeks, usually on Spitfire transport. For very large units we do use specialist transport and we require customers to have a forklift to unload.

Q. At what stage do I need a site survey?

Ideally your aperture or opening will need to be formed and the finished floor level clearly marked. This will allow your surveyor to know exactly what to measure too. It is possible to carry out a survey without the opening being ready however the manufacturing sizes will need to be agreed and signed off by you before manufacture takes place.



FREQUENTLY ASKED QUESTIONS

Q. Is there a range of glazing options?

Yes

As standard, our doors are triple glazed with laminated safety glass, inside and out. We can offer double glazed side lights but our standard specification is triple glazed, the same as the door itself.

Q. Are the doors difficult to maintain?

No.

Our S-500 Series doors are virtually maintenance free. The only maintenance required is keep the threshold free of debris, keep the door clean using warm soapy water and every 6-12 months lubricate the lock.

Q. What extra maintenance is required in a Marine environment?

Doors situated close to the sea are under constant attack from sea-salt. It is vital that every week external surfaces and hardware are washed down with warm soapy water. If you damage stainless steel hardware it will corrode and your warranty will be invalid.

Q. What guarantees do you offer?

We offer a standard guarantee on all doors which warrants that our doors will be free of defects in aluminium material, design and workmanship for 10 years. All hardware and biometric systems are warrantied for a period of 2 years only

Q. Is the coating suitable for a marine environment?

Yes

Our aluminium doors are powder coated to Qualicoat standards which is a commercial application guaranteed for 25 years. In marine environments such as a home on the coast the salt in the air can corrode the powder coating. To alleviate this we 'marine grade' the powder coating which is a slightly different grade of coating and we also treat all corners, joints, and mitres to prevent any corrosion and guarantees the finish even in the harshest coastal environment.

Q. Do you cover the whole of the UK?

Yes

Through our Design Partners we service the whole of England, Scotland, Wales, Northern Ireland, Ireland and the Channel Islands..



FREQUENTLY ASKED QUESTIONS

What is Powder Coating?

Powder coating is a dry finishing process used in many industries where a high quality, long lasting finish is required. We use it at Spitfire because it provides a high-quality, durable finish and the process is relatively environmentally friendly. This advanced process is available in an almost limitless range of colours and textures and technological advances have resulted in exceptional performance properties which allows us to give a long warranty on our finishes, with confidence.

Durability of Powder Coating

Because powder coated finishes are so tough they are used on thousands of products we come into contact with every day. Powder coating is used to protect equipment like earthmoving trucks and aircraft as well as everyday household products, that we use daily. This exceptional process is more durable than a liquid paint finish and is much more resistant to fading or degradation when faced by attack from impact, moisture, chemicals, ultraviolet light or extreme weather conditions. This also reduces the risk of scratches, chips and corrosion. In summary, a powder coated finish looks great, is consistent if applied professionally and will last a long, long time.



S-500 SERIES



- Superb Security
- Exceptional Thermal Insulation
- Extensive Selection Of 600+ Door Models
- Guaranteed Delivery Lead Times
- Marketing Support
- Entrance Door Design Software
- Made From Schüco Profiles
- The Number 1 Door In Europe
- National showrooms

WWW.SPITFIREDOORS.CO.UK

